

As the consequences of contravening these Regulations are usually most expensive all persons contemplating building any structures or any additions should, before commencing, discuss their proposals with the Municipal Drainage Board to ensure that this will be done or occur. Such action taken prior to building could save unnecessary expense.

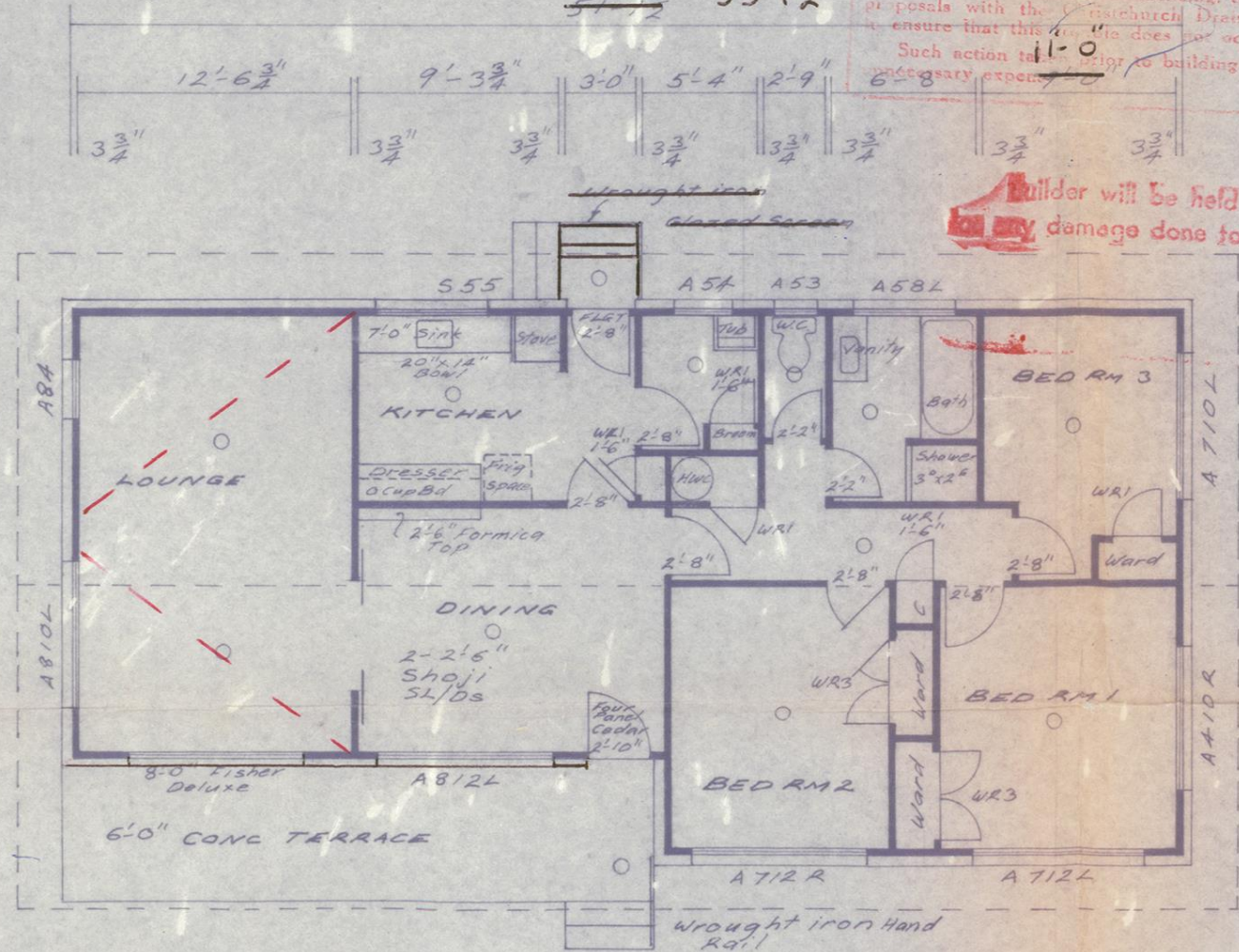
PANEL 14

Aluminum

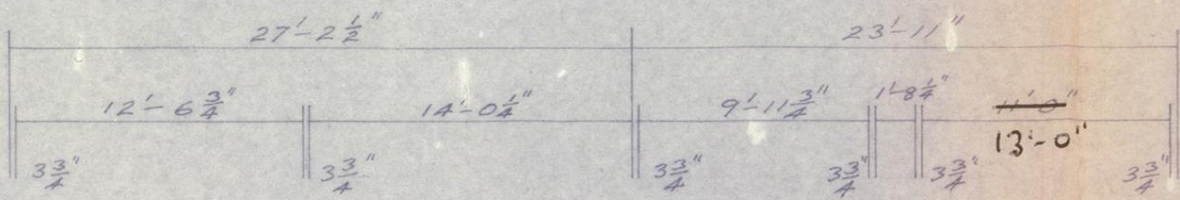
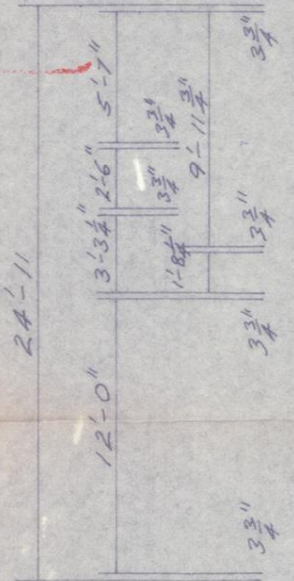
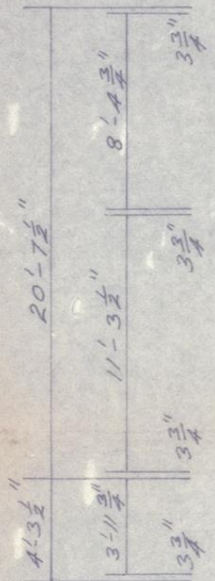
C.O.F

2 1/2"

51'-1/2" 53'-1 1/2"



Builder will be held responsible for any damage done to footpath.



PLUMBER! Please note rec attached to plan